



Enviro-Equipment Inc.
10120 Industrial Drive
Pineville NC 28134

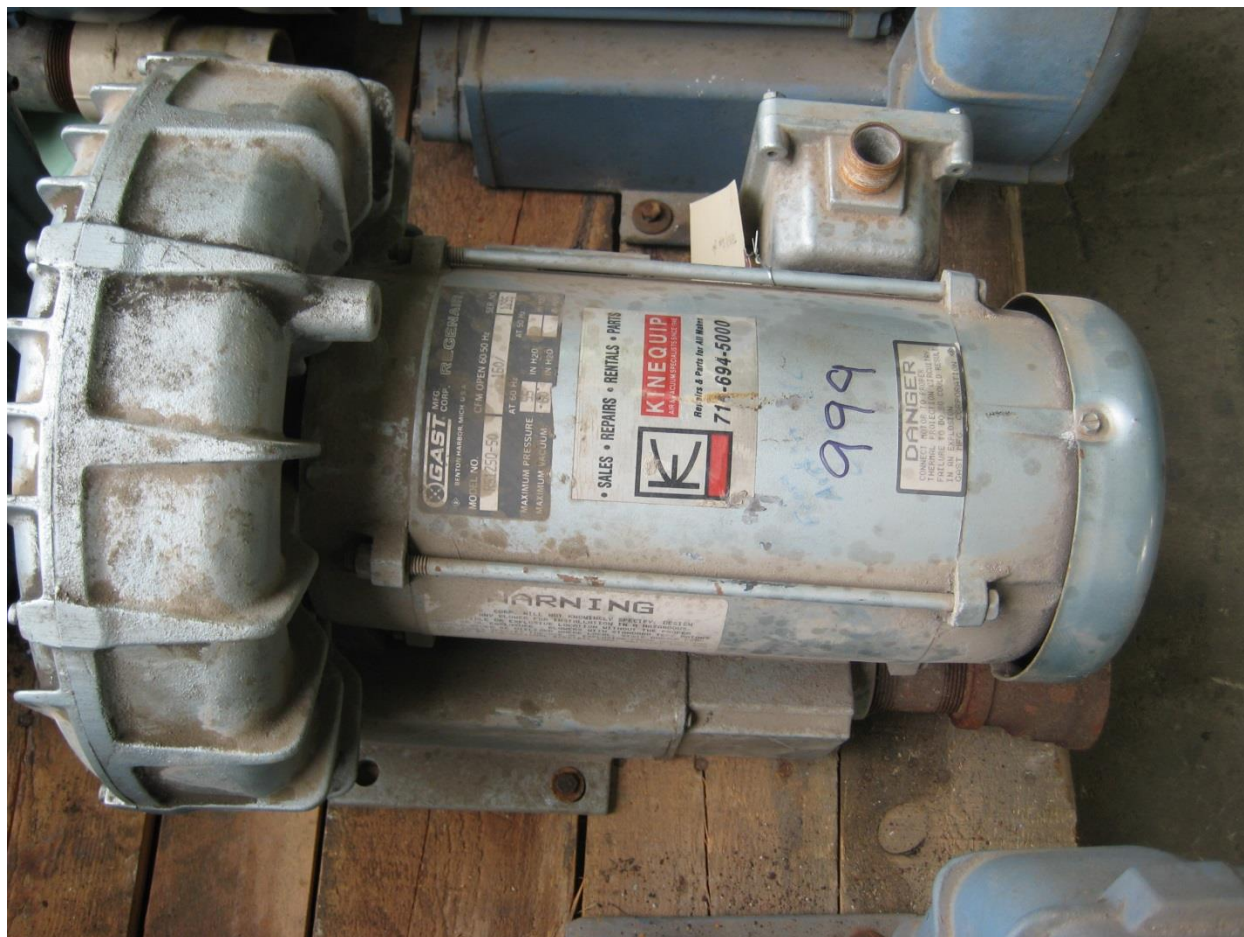
Stock#: 999

Status: In Stock, Tested

Dimensions: See Cut Sheet

Weight: See Cut Sheet

Description: Gast R5125Q-50 Regenerative Blower with 2HP 1PH 115/230V 60HZ XP Motor





GAST MANUFACTURING, INC.
 A Unit of IDEX Corporation
 Post Office Box 97
 Benton Harbor, Michigan
 Ph: 269/926-6171
 Fax: 269/925-8288

PART NUMBER:

LTD179

REV.

A

Product Specifications

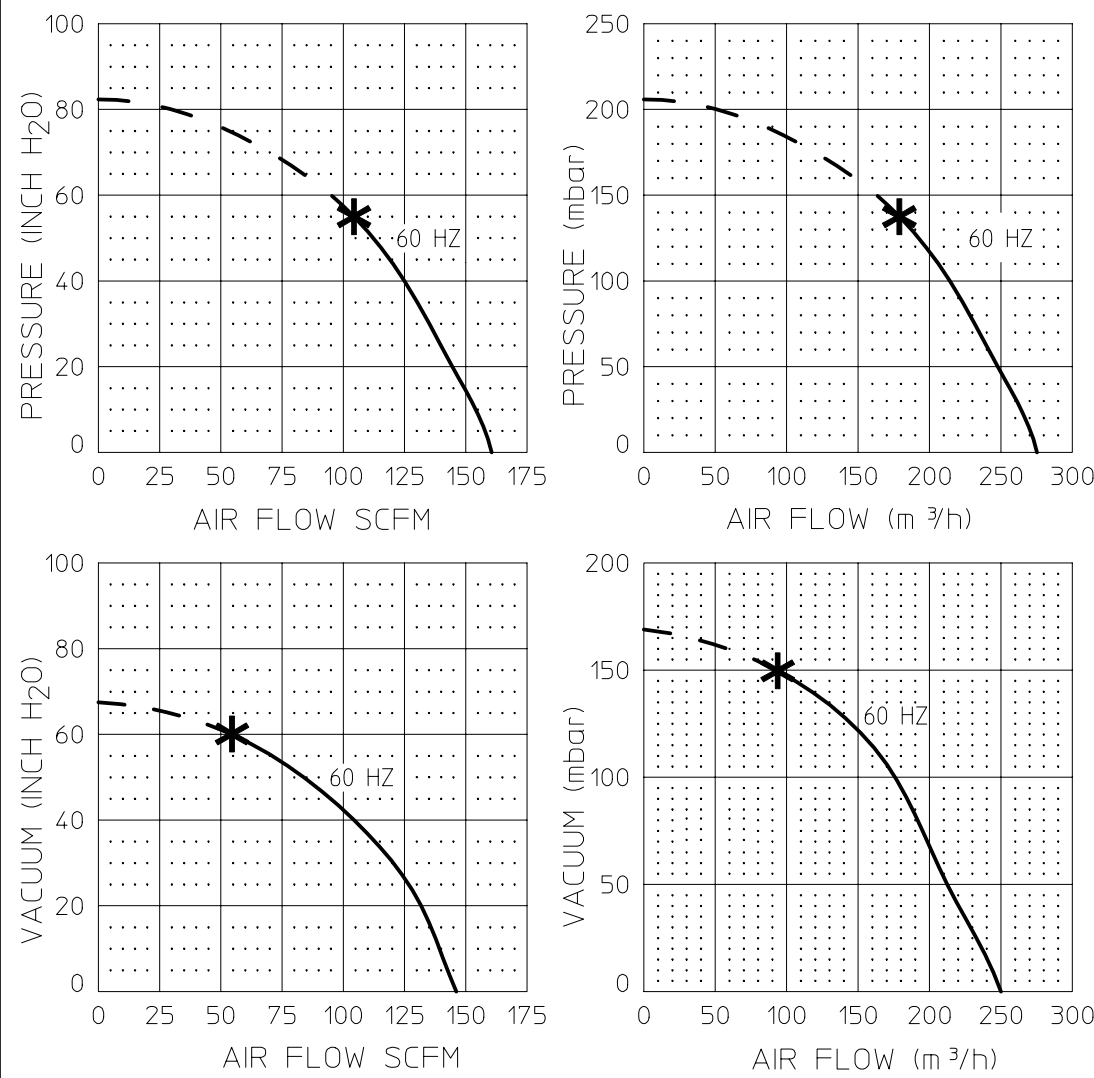
MODEL NUMBER	MOTOR SPECIFICATIONS	RPM	MAX VAC		MAX PRESS		HP	kW	NET WT.	
			"H ₂ O	mbar	"H ₂ O	mbar			lbs.	kg
R5125Q-50	115/230-60-1	3450	60	149	55	137	2.0	1,49	77	35

SOUND LEVEL 75 dB(A) MAX. @ 60 Hz
 NORMAL AMBIENT -29°C TO 40°C
 RELATIVE HUMIDITY 0% - 100% NON CONDENSING
 ENVIRONMENT CLEAN DUST FREE

UL AND CSA APPROVED MOTOR FOR EXPLOSIVE GAS ATMOSPHERES CLASS 1, GROUP D. CLASS 2, GROUP F AND G.

THIS BLOWER IS DESIGNED FOR SOIL AND GROUND WATER REMEDIATION.

Product Performance



TECHNICAL DATA SUBJECT TO CHANGE WITHOUT NOTICE.

PERFORMANCE DATA THE PERFORMANCE DATA SHOWN WAS DETERMINED UNDER THE FOLLOWING CONDITIONS:

LINE VOLTAGE @ 60 Hz. 230V OR 460V FOR 3 PHASE UNITS. 115V OR 230V FOR 1 PHASE UNITS.

LINE VOLTAGE @ 50 Hz. 220V FOR 3 PHASE OR 1 PHASE UNITS.

UNITS IN A TEMPERATURE STABLE CONDITION.

DELIVERY MEASUREMENTS MADE WITH OUTPUT PORT THROTTLED.

SUCTION MEASUREMENTS MADE WITH INPUT PORT THROTTLED.

TEST CONDITIONS: INLET AIR DENSITY @ 0.075 lbs. per cu. ft. [20°C (68°F), 29.92" Hg (14.7 PSIA)].

NORMAL PERFORMANCE VARIATIONS ON THE RESISTANCE CURVE WITHIN ±10% OF SUPPLIED DATA CAN BE EXPECTED.

* = RECOMMENDED MAXIMUM DUTY

--- INTERMITTENT DUTY ONLY

Product Dimensions

mm / inches

