



Enviro-Equipment Inc.  
10120 Industrial Drive  
Pineville NC 28134

SERIAL#: EEI-1324

STATUS: IN STOCK, TESTED, READY TO GO

DIMENSIONS: 48x48x75", 769 pounds

DESCRIPTION: Air Sparging or Bio Sparging Skid with Hydrovane V04 Compressor Capable of 19.5 CFM @ 100 PSIG. Includes particulate, oil and water separator filters, pressure regulator with gauge, 4 zone manifold each with ball valve, pressure gauge and flow meter with needle valve for flow adjustment. Compressor is mounted on 80 gallon tank with electric auto drain valve. Start/Stop Control Box with hour meter wired 230V 1PH. Includes 20' 3 wire power cable.





Enviro-Equipment Inc.  
10120 Industrial Drive  
Pineville NC 28134



Performance Data	Model	V01		V04		V05		V07	
<b>Performance</b>	<b>psig</b>	<b>100</b>	<b>150</b>	<b>100</b>	<b>150</b>	<b>100</b>	<b>150</b>	<b>100</b>	<b>150</b>
F.A.D.	<b>cfm</b>	6.3	4.5	19.5	16	NA	22.0	NA	28.9
Total Input Power (when compressor is new)	<b>kW</b>	1.7	1.8	4.9	4.8	-	7.0	-	8.6
Total Input Power (after 500 operating hours)	<b>kW</b>	1.6	1.7	4.6	4.5	-	6.6	-	8.2
Off-Load Power	<b>kW</b>	1.7	1.8	4.9	4.8	-	7.0	-	8.6

Compressor Details		V01	V04	V05	V07
Noise level	<b>dB(A)</b>	65	72	73	73
Power	<b>hp (kW)</b>	2 (1)	5.5 (4)	7.5 (5.5)	10 (7.5)
Starter Type		Automatic Direct-On-Line			
Operating Controls		Automatic Stop/Start		Automatic Stop/Start or Continuous Run	
Air End Rotation Speed	<b>rpm</b>	1760			
Oil Capacity	<b>Gallons</b>	0.30	0.50	1.10	
Air Discharge Temperature (above ambient)	<b>°F</b>	15 - 20°F (approach temp.)			

Installation		V01	V04	V05	V07
Air Outlet Size	<b>NPT</b>	1/2			
Phase	<b>ph</b>	Single phase or Three phase			Three phase
Available Motor Voltages	<b>V</b>	208 / 230 / 460			
Ambient Temperature Range	<b>°F</b>	32 - 104°F			

Electrical Data		V01	V04	V05	V07
<b>Starter</b>		<i>Single phase - Direct-On-Line</i>			
Electrical Supply	<b>Voltage</b>	230V	230V	230V	n/a
Suggested Incoming Supply Cable *	<b>Rating</b>	12 AWG	8 AWG	8 AWG	n/a
110% Full Line Current	<b>Amps</b>	10.6	25.3	34.3	n/a
Motor Efficiency (at 100% Duty)	<b>%</b>	78	82.5	85.5	n/a

Electrical Data		V01	V04	V05	V07
<b>Starter</b>		<i>Three phase - Direct-On-Line</i>			
Electrical Supply	<b>Voltage</b>	208 - 230V	208 - 230V	208 - 230V	208 - 230V
Suggested Incoming Supply Cable *	<b>Rating</b>	14 AWG	12 AWG	8 AWG	8 AWG
110% Full Line Current	<b>Amps</b>	6.4	15	24.2	35.4
Motor Efficiency (at 100% Duty) **	<b>%</b>	84	89.5	89.5	89.5

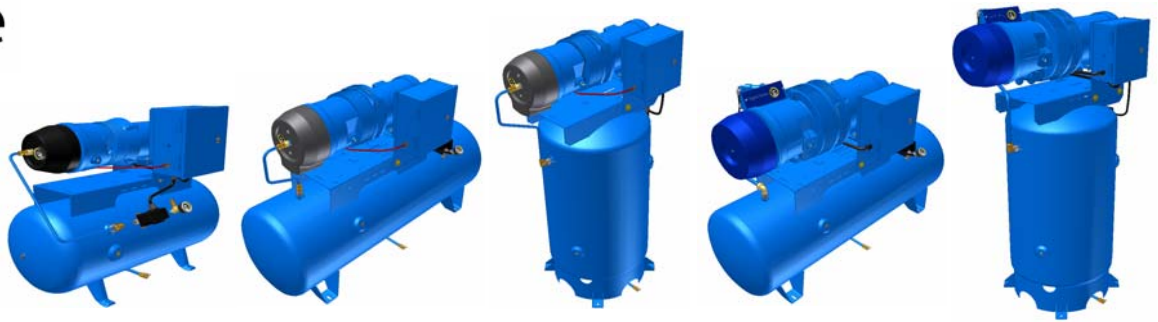
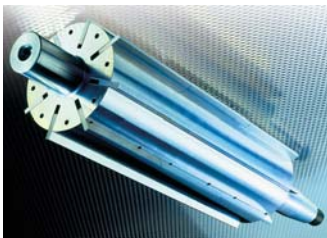
Electrical Supply	<b>Voltage</b>	460V	460V	460V	460V
Suggested Incoming Supply Cable *	<b>Rating</b>	14 AWG	14 AWG	12 AWG	12 AWG
110% Full Line Current	<b>Amps</b>	3.1	7.15	11.1	14.85
Motor Efficiency (at 100% Duty) **	<b>%</b>	84	89.5	89.5	89.5

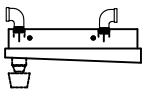
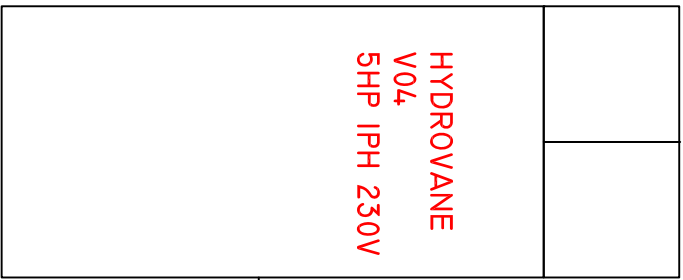
Motor Data		V01	V04	V05	V07
Motor Service Factor		1.15			
Standard Drive Motor Detail	<b>NEMA</b>	TEFC			

Model Dimensions	Overall Length (in.)	Overall Width (in.)	Overall Height (in.)	Overall Weight (lbs.)
V01PUTS	30	11	18	130
V01PURHS-3	41	19	34	240
V04PUTS	42	24	24	315
V04PURVS-8	38	26	66	570
V04PURHS-8	65	22	40	425
V05PURVS-8	39	26	69	695
V05PURHS-8	66	22	43	550
V07PURHS-8	66	22	43	670
V04PDRHS-12	72	27	48	845
V05PDRHS-12	76	27	50	1210
V07PDRHS-12	76	27	50	1325

\* Based on 75°C conductor temperature rating, copper wire (insulated), and 104°F ambient. Does not account for voltage drop.

\*\* V04PUTS 3-phase motor efficiency @ 100% duty is 87.5%.





SYMBOL	DESCRIPTION
	SAMPLE PORT
	VACUUM SWITCH
	VACUUM GAUGE
	TEMPERATURE SWITCH
	PRESSURE SWITCH
	PRESSURE GAUGE
	TEMPERATURE GAUGE
	RELIEF VALVE
	SOLENOID VALVE
	WYE STRAINER
	CHECK VALVE
	GATE VALVE
	BALL VALVE
	VACUUM FILTER
	FILTER SILENCER
	EXHAUST MUFFLER
	FLOW METER
	TRANSFER PUMP
	VACUUM BLOWER
	AIR COMPRESSOR
	MOISTURE SEPARATOR
	HEAT EXCHANGER
	INTRINSICALLY SAFE WIRING
	POWER WIRING

ENVIRO-EQUIPMENT, INC.	
10120 Industrial Drive Pineville, N.C. 28134 PHONE 704-556-7723 FAX 704-556-7728	
DATE	REVISION
BY	CRD

CUSTOMER:	Geosyntec
TITLE:	Air Compressor Skid
SCALE:	1" = 1'-0"
DATE:	6-6-17
BY:	NTS
CHECKED BY:	EVON CHAW
APPROVED BY:	EC
PROJECT NO.:	EE-1324