



EEI-1278 Gast 2067-P118 Air Sparge Skid

SPECIFICATIONS

Skid Dimensions:

Skid Weight:

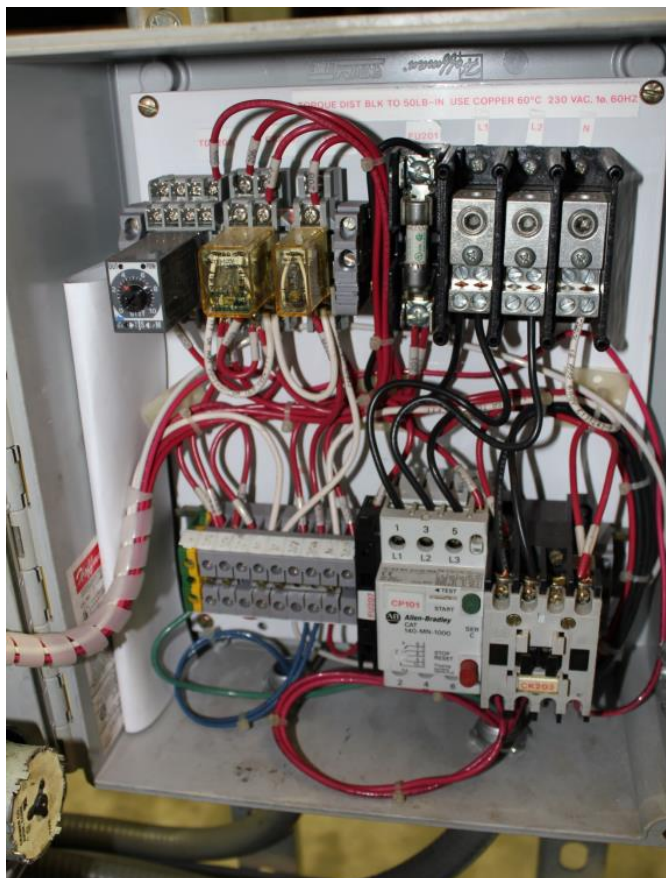
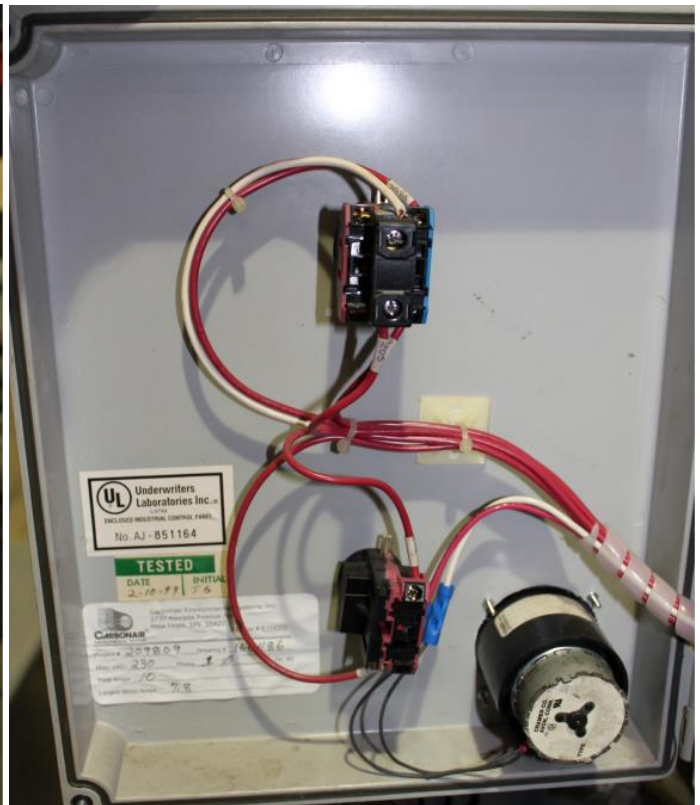
Description: Air Sparge Skid (Rebuilt)

- Gast 2067-P118 Rotary Vane Compressor with 1HP 1PH TEFC Motor, 17 CFM Open Flow, 15 PSIG Max
- Gast Intake Filter, 10 Micron, Replacement Element #AJ134C
- Pressure and Temperature Gauges
- Adjustable Pressure Relief Valve
- Dwyer 1950P15-2F Adjustable High Pressure Shut Down Switch
- Control Panel with On/Off Switch, Alarm Reset, Hour Meter – Wired 230V 1PH
- All Mounted on Steel Skid





Enviro-Equipment, Inc. Remediation Division





MODEL 2067 SERIES

OILLESS:

**27" HG MAX. VAC., 17 CFM OPEN FLOW
 15 PSI MAX. PRESSURE**

