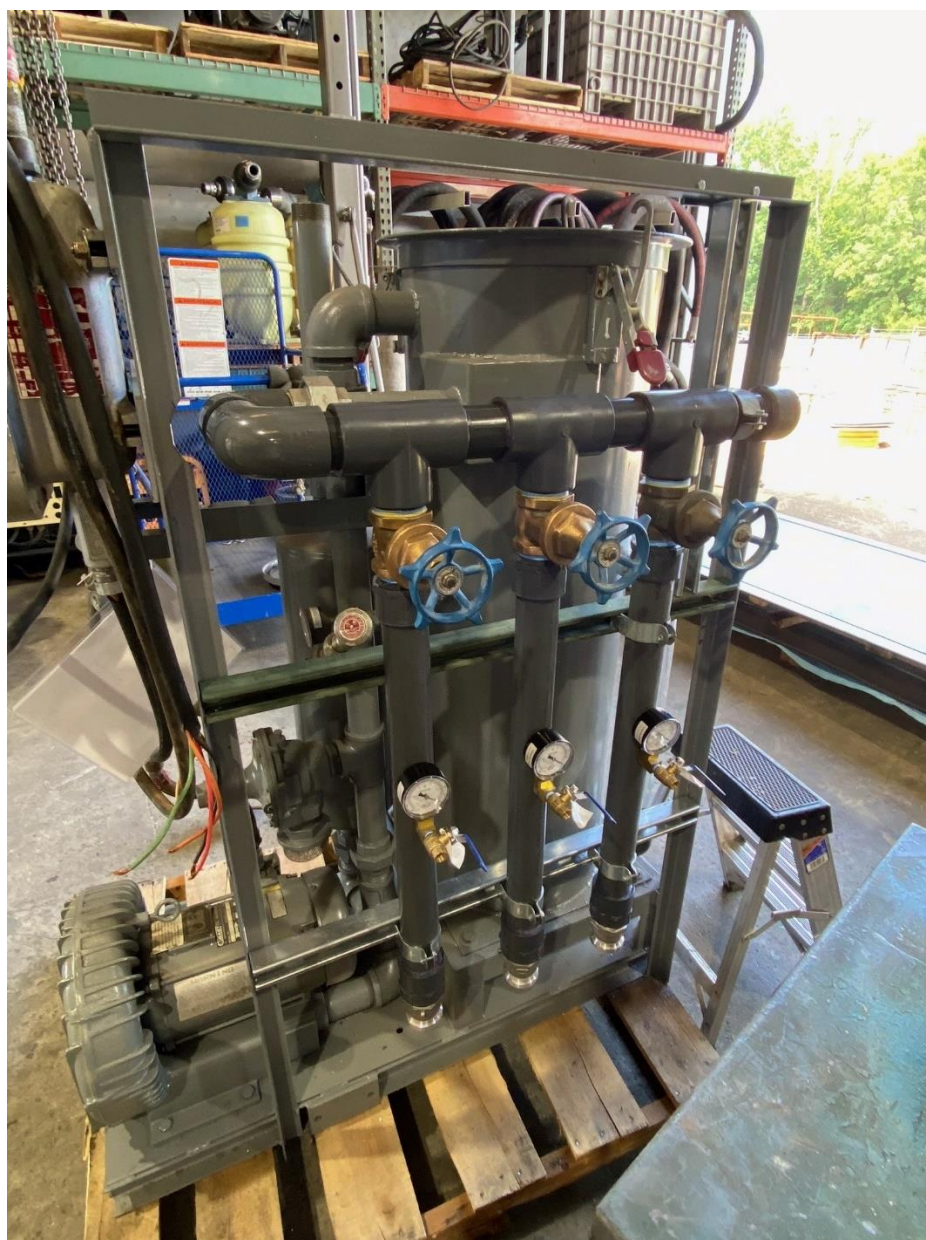




Enviro-Equipment Inc.
10120 Industrial Drive
Pineville NC 28134

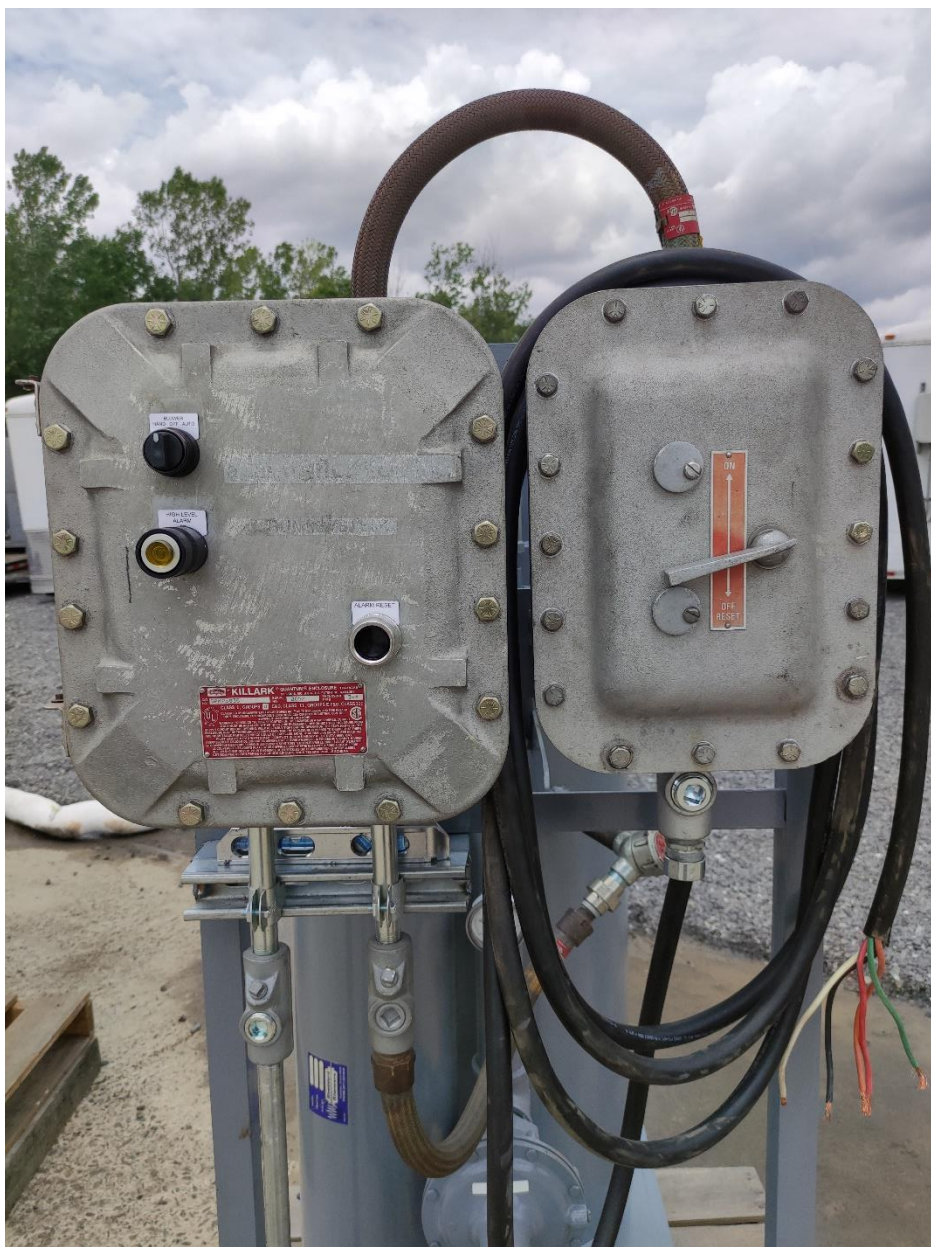
Serial#: EEI-1290

Description: SVE Skid Including -
Gast R6340R-50 4HP 3PH 208-230/460 3450RPM XP Blower
KO Tank with High Level Float, Drain Valve, Sight Glass, Demister Filter/Pad
2" Exhaust Silencer
Vacuum Relief Valve
3x 2" SVE Manifold Legs with Gate valve, Vacuum Gauge, Sample Port
230V 3PH XP Disconnect and Relay Logic Control Panel
All Mounted on Common Skid





Enviro-Equipment Inc.
10120 Industrial Drive
Pineville NC 28134





Enviro-Equipment Inc.
10120 Industrial Drive
Pineville NC 28134





GAST MANUFACTURING, INC.
A Unit of IDEX Corporation
Post Office Box 97
Benton Harbor, Michigan
Ph: 269/926-6171
Fax: 269/925-8288

PART NUMBER:

LTD182

REV.

A

Product Specifications

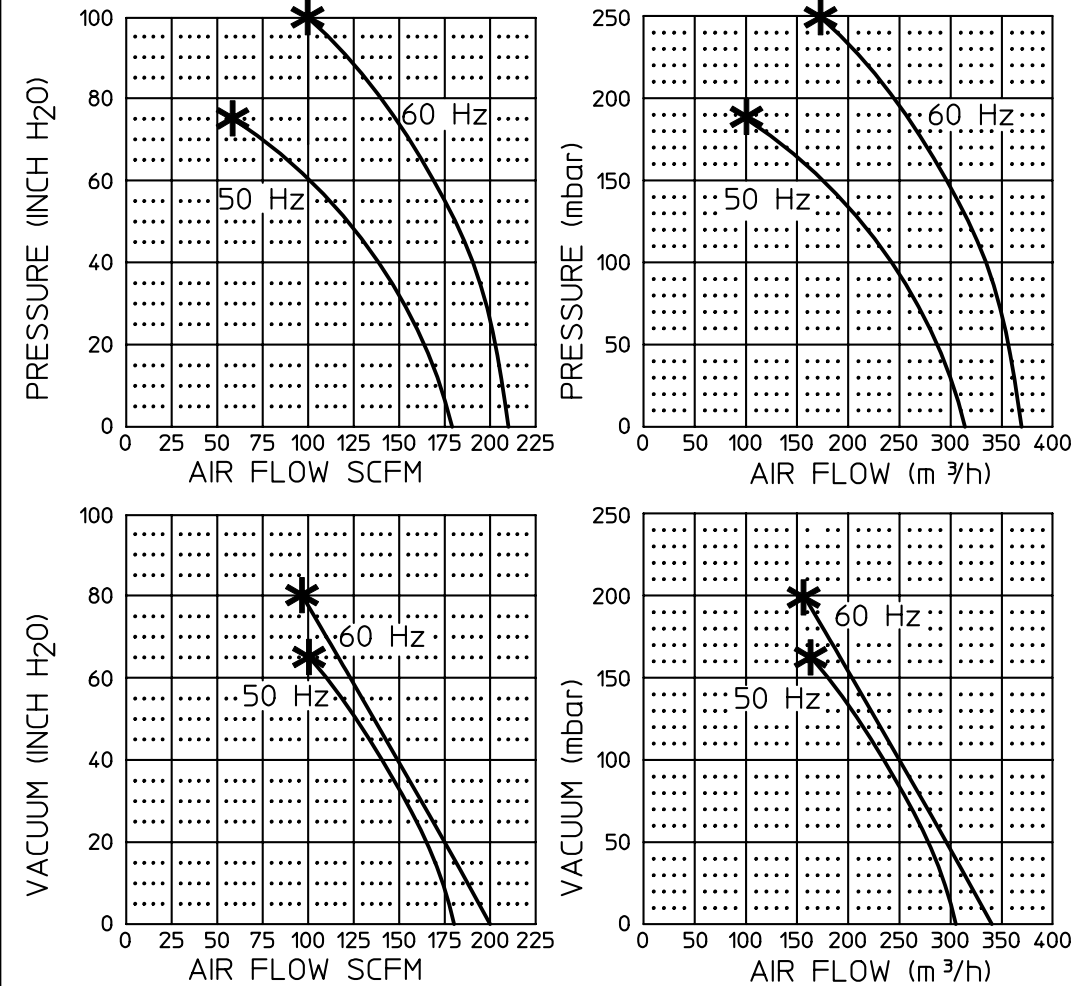
MODEL NUMBER	MOTOR SPECIFICATIONS	RPM	MAX VAC		MAX PRESS		HP	kW	NET WT.	
			"H ₂ O	mbar	"H ₂ O	mbar			lbs.	kg
R6340R-50	208-230/460-60-3	3450	80	199	100	249	4.0	3,0	112	51
	190-220/380-415-50-3	2850	65	162	75	187	3.0	2,2		

SOUND LEVEL 72/69 dB(A) MAX. @ 60/50 Hz
NORMAL AMBIENT -29°C TO 40°C
RELATIVE HUMIDITY 0% - 100% NON CONDENSING
ENVIRONMENT CLEAN DUST FREE

UL AND CSA APPROVED MOTOR FOR EXPLOSIVE GAS ATMOSPHERES CLASS 1, GROUP D.

THIS BLOWER IS DESIGNED FOR SOIL AND GROUND WATER REMEDIATION.

Product Performance



TECHNICAL DATA SUBJECT TO CHANGE WITHOUT NOTICE.

PERFORMANCE DATA
THE PERFORMANCE DATA SHOWN WAS DETERMINED UNDER THE FOLLOWING CONDITIONS:

LINE VOLTAGE @ 60 Hz. 230V OR 460V FOR 3 PHASE UNITS. 115V OR 230V FOR 1 PHASE UNITS.

LINE VOLTAGE @ 50 Hz. 220V FOR 3 PHASE OR 1 PHASE UNITS.

UNITS IN A TEMPERATURE STABLE CONDITION.

DELIVERY MEASUREMENTS MADE WITH OUTPUT PORT THROTTLED.

SUCTION MEASUREMENTS MADE WITH INPUT PORT THROTTLED.

TEST CONDITIONS: INLET AIR DENSITY @ 0.075 lbs. per cu. ft. [20°C (68°F), 29.92" Hg (14.7 PSIA)].

NORMAL PERFORMANCE VARIATIONS ON THE RISISTANCE CURVE WITHIN ±10% OF SUPPLIED DATA CAN BE EXPECTED.

* DENOTES RECOMMENDED MAXIMUM DUTY

Product Dimensions

