



Enviro-Equipment Inc.  
10120 Industrial Drive  
Pineville NC 28134

Stock#: 435

Status: In stock

Dimensions: 10"x8"x7" 4 lbs

Description: EG&G Rotron filter housing.

Model Number- 515254

Replacement element- 516134

Port size- 1 ½

Number of ports- 2



## Accessories

### Filtration - Inline Filter (Dual Connection)

# ROTRON®

Inline Filters protect the blower from harmful dust and other particles that may be drawn into the blower through the air distribution system. Normally used in vacuum systems.

#### SPECIFICATIONS:

HOUSING – Steel

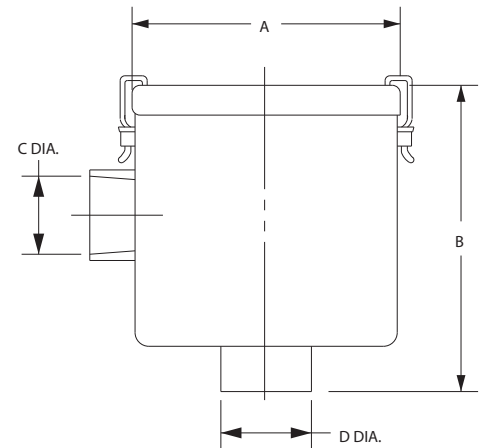
MEDIA – Polyester

EFFICIENCY – 97-98% (8 to 10 micron particle size)

FILTER ELEMENT – Replaceable (see filter elements)

NOTE: "Z" MEDIA (1 to 3 micron particle size) available

Inline filter PN 271200 is a straight through design  
Inlet is directly opposite of outlet



\* Feature 1/4" threaded tap for gauge connection on inlet and outlet

		Part/Model Number							
Specification	Units	271200	516461	515254	515255	515256	516463*	516465*	517611*
Filter Element	-	271078	516434	516434	516435	516435	515135	515135	516515
Ref Blower Model	-	A	B	C, D	E	F	G	H	H
Inlet Connection	-	1.75 SO	1.00 NPSC-F	1.50 NPSC-F	2.00 NPSC-F	2.50 NPSC-F	3.00 NPT-M	4.00 NPT-M	6.00 NPT-M
Outlet Connection	-	2.00 SO	1.00 NPSC-F	1.50 NPSC-F	2.00 NPSC-F	2.50 NPSC-F	3.00 NPT-M	4.00 NPT-M	6.00 NPT-M
Dimension A	Inches	5.25	7.25	7.00	8.00	8.00	14.00	14.00	18.00
	mm	133.4	184.2	177.8	203.2	203.2	355.6	355.6	457.2
Dimension B	Inches	8.31	6.50	6.50	10.25	10.25	26.50	27.00	28.00
	mm	211.1	165.1	165.1	260.4	260.4	673.1	685.8	711.2
Dimension C	Inches	2.00	1.00	1.50	2.00	2.50	3.00	4.00	6.00
	mm	50.8	25.4	38.1	50.8	63.5	76.2	101.6	152.4
Dimension D	Inches	1.75	1.00	1.50	2.00	2.50	3.00	4.00	6.00
	mm	44.5	25.4	38.1	50.8	63.5	76.2	101.6	152.4
Z Media Filter PN	-		517886	517887	517888	517889	517890	517891	517892

#### Blower Model Reference Key

A = SPIRAL	E = DR/EN/CP 656, 6, 633, S7
B = DR/EN/CP 068, 083, 101, 202	F = DR/EN/CP 757, 808, 858, S9, P9 (Inlet Only)
C = DR/EN/CP 303, 312, 313, 353	G = DR/EN/CP 833, S13, P13 (Inlet Only)
D = DR/EN/CP 404, 454, 513, 505, 555, 523	H = DR/EN/CP 909, 979, 1233, 14, S15, P15 (Inlet Only)

This document is for informational purposes only and should not be considered as a binding description of the products or their performance in all applications. The performance data on this page depicts typical performance under controlled laboratory conditions. AMETEK is not responsible for blowers driven beyond factory specified speed, temperature, pressure, flow or without proper alignment. Actual performance will vary depending on the operating environment and application. AMETEK products are not designed for and should not be used in medical life support applications. AMETEK reserves the right to revise its products without notification. The above characteristics represent standard products. For product designed to meet specific applications, contact AMETEK Technical & Industrial Products Sales department.

AMETEK TECHNICAL & INDUSTRIAL PRODUCTS  
75 North Street, Saugerties, NY 12477  
USA: +1 215-256-6601 - Europe: +44 (0) 845 366 9664 - Asia: +86 21 5763 1258  
Customer Service Fax: +1 215.256.1338  
www.ametektip.com