



Enviro-Equipment Inc.
10120 Industrial Drive
Pineville NC 28134

Stock#: 519

Status: In stock

Dimensions: 4 ½" x 4 ½" x 21 ½"

Weight: 8 lbs

Description: Solberg Silencer (NEW)

Port size- 2 ½"

Model SLCR-250

Rated for 385 CFM





Absorptive Silencers

Air Intake and Discharge

"SLCR" Series 1/2" - 4" MPT, FPT

APPLICATIONS & EQUIPMENT

- ♦ Small Air Compressors
- ♦ Centrifugal Blowers
- ♦ Regenerative Blowers
- ♦ Vacuum Pumps & Systems
- ♦ Vacuum Packaging Equipment
- ♦ Vacuum Lifters
- ♦ Small Low Pressure Vents
- ♦ Blowers - Side Channel

FEATURES & SPECIFICATIONS

- ♦ Layered sound absorbent media
- ♦ **Minimal** pressure drop because it does not rely on internal baffles, tubes or other restrictive devices
- ♦ Reduces high frequency noise up to 30 decibels (Due to the wide range of applications and machines these units are used on, please inquire for your specific application.)
- ♦ **Inlet or Discharge** silencing applications with maximum temperature of 212°F (100°C)
- ♦ Durable inline carbon steel construction with baked enamel finish
- ♦ For inline air service

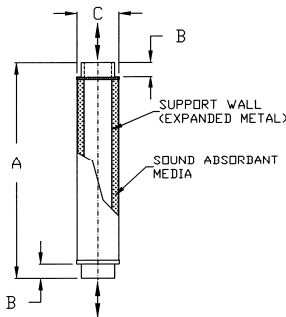
OPTIONS (Inquiries Encouraged)

- ♦ Flange Adapters
- ♦ Larger sizes available

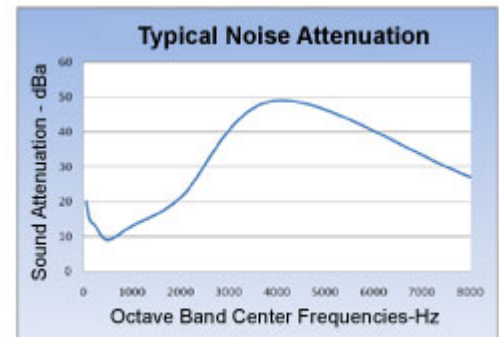
CONFIGURATION



DRAWING



Dimension tolerance $\pm 1/4"$



Note: Noise attenuation may vary due to the wide range of applications and equipment.

Model No.	Inlet & Outlet	Connection Style	DIMENSIONS - inches			Rated Flow SCFM	Approx. Wt. Lbs
			A	B	C		
SLCR100	1"	FPT	12	11/16	2 1/2	42	2
SLCR125	1 1/4"	FPT	12	11/16	2 1/2	55	2
SLCR150	1 1/2"	FPT	12	11/16	3 1/8	155	3
SLCR200	2"	FPT	15 3/4	11/16	3 5/8	270	4
SLCR250	2 1/2"	FPT	21	1 1/2	4 5/8	385	8
SLCR300	3"	FPT	26	1 9/16	5 1/8	575	10
SLCR400	4"	FPT	23 7/8	1 11/16	10	575	26
SLCRT050	1/2"	MPT	14 1/2	2	2 1/2	25	2
SLCRT075	3/4"	MPT	14 1/2	2	2 1/2	35	2
SLCRT100	1"	MPT	14 1/2	2	2 1/2	42	2
SLCRT125	1 1/4"	MPT	14 1/2	2	2 1/2	55	2
SLCRT150	1 1/2"	MPT	14	1 3/4	3 1/8	155	3
SLCRT200	2"	MPT	18 1/2	2 1/8	3 5/8	270	4
SLCRT250	2 1/2"	MPT	23 11/16	2 5/8	4 5/8	385	8
SLCRT300	3"	MPT	28	2 5/8	5 1/8	575	10
SLCRT400	4"	MPT	29 5/16	4	10	575	26

Note: Model offerings and design parameters may change without notice.

1151 Ardmore Ave. • Itasca, IL 60143 USA

Sales/Service: 630.773.1363 • Fax: 630.773.0727

E-mail: sales@solbergmfg.com • Web Site: www.solbergmfg.com