



Enviro-Equipment Inc.
10120 Industrial Drive
Pineville NC 28134

Serial#: EEI-1302

Status: In stock, Blower Tested

Dimensions: See Cut Sheet

Description: Waste2Water Aluminum Air Stripper Model 2-2-4
1 to 25 Gallons Per Minute
210 CFM Air Flow
Dwyer 0-20" WC Magnehelic Pressure Gauge
Dwyer 1950-0-2F Explosion Proof Sump Low Pressure Switch
Clear PVC Sight Glass with 3 Level Float Switch for Pump Out

Also includes loose blower American Fan Model AF-12 Blower with 3HP 3PH 230/460V 3450RPM XP Motor



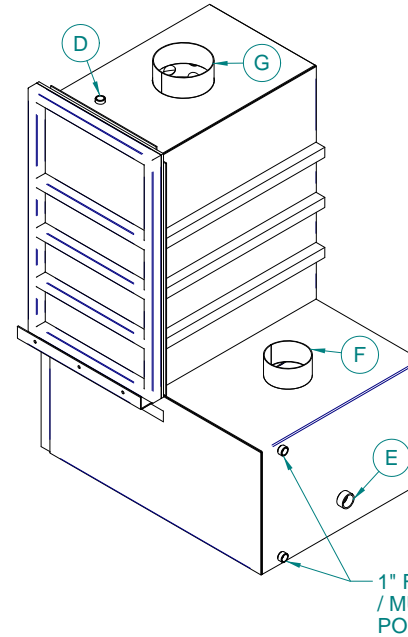
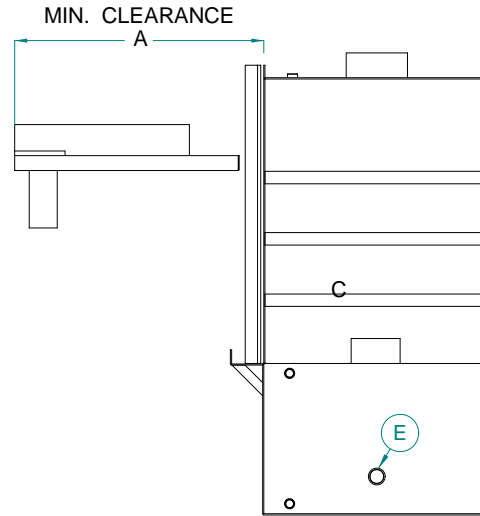
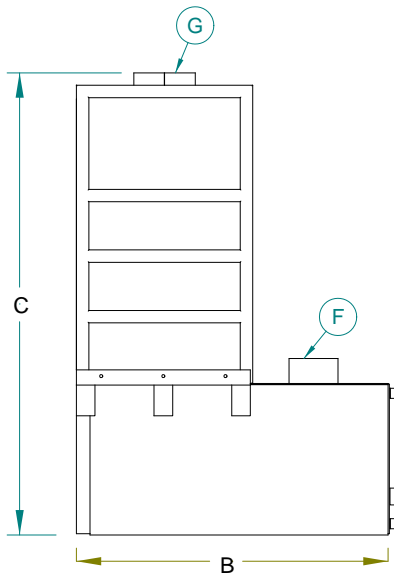
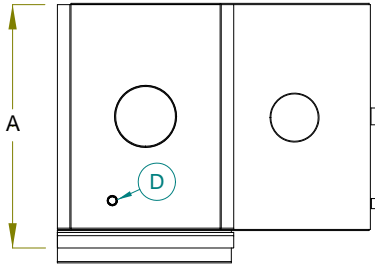
AIR STRIPPER SPECIFICATIONS

ESD MODEL #	# OF TRAYS	PROCESS FLOW RANGE (GPM)	WATER INFLUENT / EFFLUENT SIZE (FNPT)	AIR FLOW REQUIRED (SCFM)	AIR INLET DIAMETER		DRY WEIGHT lbs.	OPERATING WEIGHT lbs.	SHELL DIM.		
					F	G			LENGTH	WIDTH	HEIGHT
2-2-4	4	1-25	3" / 3"	210	4"	6"	340	1300	27	51	75
2-2-6	6	1-25	3" / 3"	210	4"	6"	465	1545	27	51	95
2-3-4	4	1-60	3" / 3"	320	4"	6"	390	1830	39	51	75
2-3-6	6	1-60	3" / 3"	320	4"	6"	565	2185	39	51	95
2-4-4	4	1-75	3" / 3"	420	4"	6"	475	2395	51	51	75
2-4-6	6	1-75	3" / 3"	420	4"	6"	725	2885	51	51	95
2-6-4	4	1-120	4" / 4"	600	6"	8"	650	3530	75	51	75
2-6-6	6	1-120	4" / 4"	600	6"	8"	925	4165	75	51	95
*2-8-4	4	10-150	4" / 4"	850	6"	8"	850	3970	51	81	75
*2-8-6	6	10-150	4" / 4"	850	6"	8"	1225	4825	51	81	95
*2-12-4	4	10-250	4" / 6"	1300	8"	10"	1275	5915	75	81	75
*2-12-6	6	10-250	4" / 6"	1300	8"	10"	1750	7110	75	81	95

* Trays in these models are two piece trays, side by side for ease of removal for cleaning.

Material of Construction - Marine Grade 5052 Aluminum

304SS, 316SS available as optional



ALL IDEAS, DESIGNS AND PLANS INDICATED OR REPRESENTED BY THIS DRAWING ARE OWNED BY AND THE PROPERTY OF ESD INC. AND WERE CREATED, EVOLVED AND DEVELOPED FOR USE ON AND IN CONJUNCTION WITH THE SPECIFIED PROJECT. NONE OF THE IDEAS, DESIGNS OR PLANS SHALL BE USED OR DISCLOSED TO ANY PERSONS FIRM OR CORPORATION FOR ANY PURPOSE WHATSOEVER WITHOUT WRITTEN PERMISSION OF ESD WASTE2WATER, INC.



495 Oak Road
Ocala, FL 34472
Phone (800) 277-3279
Fax (352) 680-0059

SCALE VERIFICATION

THIS BAR REPRESENTS ONE INCH ON ORIGINAL DRAWING



USE TO VERIFY DRAWING

SIZE: B SHEET #: 1 OF 1

SCALE: NTS

UPDATED BY:

DRAWN BY: J. Andrews

APPROVED BY: NA

COMPLETED: 6/28/11

UPDATED:

AIR STRIPPER SPECIFICATIONS

PRES.

JOB NUMBER:

PRODUCT NUMBER:

AS

FILE NAME: "AIR STRIPPER SPEC.dft"