



Enviro-Equipment Inc.
10120 Industrial Drive
Pineville NC 28134

Serial#: EEI-1275

Date: 6/25/14

Status: In stock, tested

Dimensions: 27.5" L x 22" W x 20.75" H, 135 LBS

Description: 1HP 1PH 115V XP Rotron EN404 Regenerative Blower SVE Pilot Test Unit

Rotron Blower Model EN404AR58ML

1HP, 115/230V, 11.4/5.69 Amp, 14.4/7.2 Max Amps, 1PH, 60 Hz
107 SCFM Max, 57 IWG Max Pressure, 52 IWG Max Vacuum

Solberg CSL-851-200HC Inlet Filter Housing, 851 Element Size

3/8" Exhaust Sample Port / Anemometer Port

0 – 60 IWG Vacuum Gauge

115V 1PH XP On/Off Snap Switch with 12' 115V XP Power Cord

2" Male Camlock Inlet and Exhaust Connections

2" Dilution Air Ball Valve

Mounted On Steel Plate with Handles and Rubber Feet

Rental Applications Includes Rotron MS300P Knockout Tank, 2" Camlock Hoses, 2/4/6" Well Adapter





Enviro-Equipment Inc.
10120 Industrial Drive
Pineville NC 28134



ROTRON® Regenerative Blowers

EN 404M & CP 404M Sealed Regenerative Blower w/Explosion-Proof Motor

FEATURES

- Manufactured in the USA – ISO 9001 compliant
- Maximum flow: 107 SCFM
- Maximum pressure: 57 IWG
- Maximum vacuum: 52 IWG
- Standard motor: 1.0 HP, explosion-proof
- Cast aluminum blower housing, cover, impeller & manifold; cast iron flanges (threaded); teflon lip seal
- UL & CSA approved motor with permanently sealed ball bearings for explosive gas atmospheres Class I Group D minimum
- Sealed blower assembly
- Quiet operation within OSHA standards

MOTOR OPTIONS

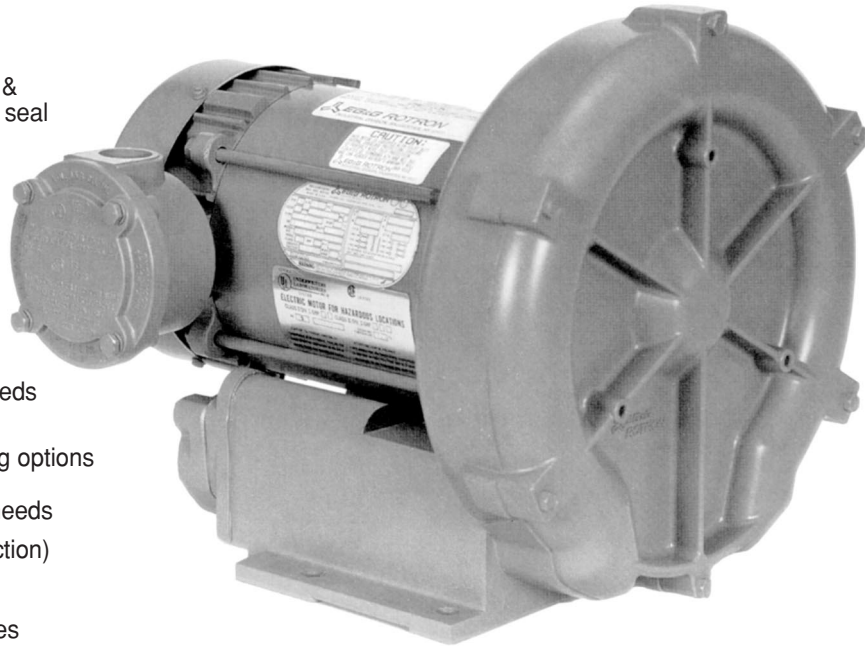
- International voltage & frequency (Hz)
- Chemical duty, high efficiency, inverter duty or industry-specific designs
- Various horsepower for application-specific needs

BLOWER OPTIONS

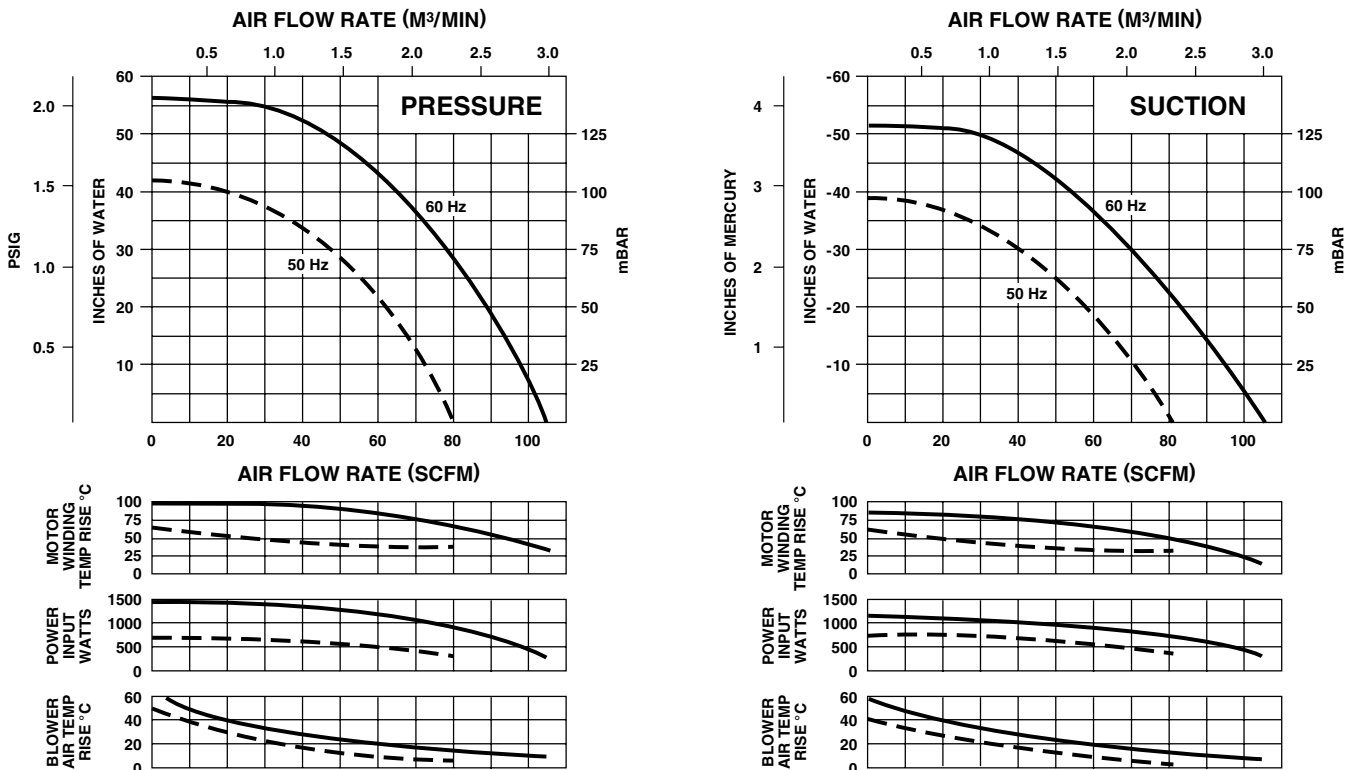
- Corrosion resistant surface treatments & sealing options
- Remote drive (motorless) models
- Slip-on or face flanges for application-specific needs

ACCESSORIES (See Catalog Accessory Section)

- Flowmeters reading in SCFM
- Filters & moisture separators
- Pressure gauges, vacuum gauges & relief valves
- Switches – air flow, pressure, vacuum or temperature
- External mufflers for additional silencing
- Air knives (used on blow-off applications)
- Variable frequency drive package



BLOWER PERFORMANCE AT STANDARD CONDITIONS

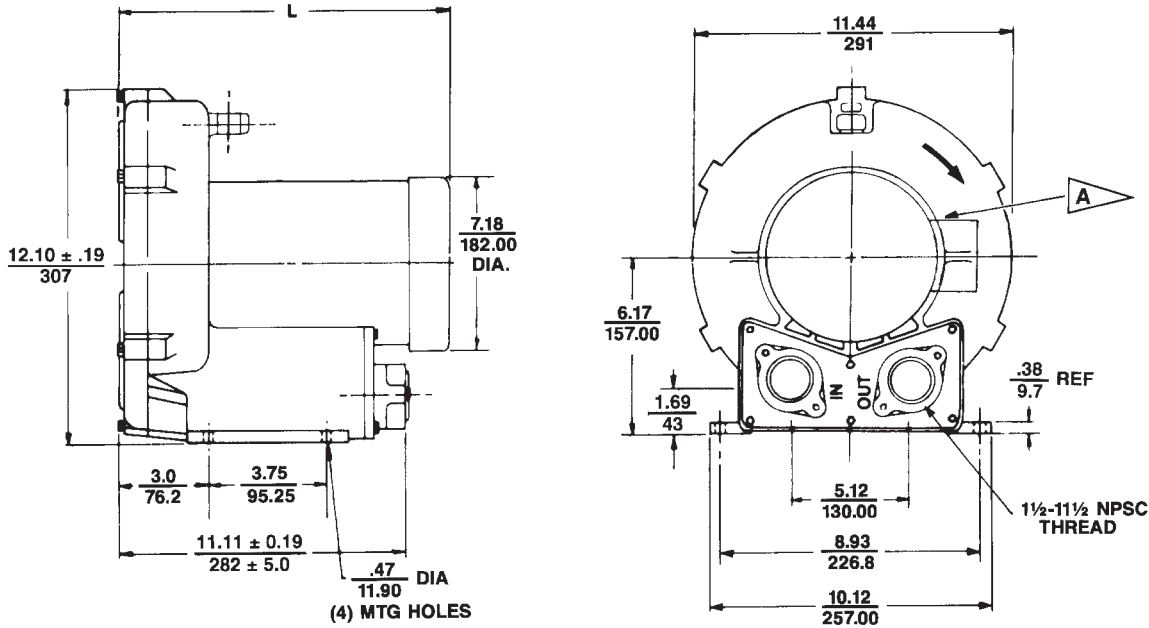


Rev. 2/04

ROTRON® Regenerative Blowers

EN 404M & CP 404M Sealed Regenerative Blower w/Explosion-Proof Motor

Scale CAD drawing available upon request.



DIMENSIONS: $\frac{IN}{MM}$
 TOLERANCES: .XX $\pm \frac{.08}{2.0}$
 .XXX $\pm \frac{.030}{.800}$
 (UNLESS OTHERWISE NOTED)

MODEL	L (IN) $\pm .30$	L (MM) ± 8
EN/CP404AR72ML	14.58	370.3
EN/CP404AR58ML	15.58	396

A 0.75" NPT CONDUIT CONNECTION AT 12 O'CLOCK POSITION

SPECIFICATIONS

MODEL	EN404AR58ML	EN404AR72ML	CP404FQ58MLR	CP404FQ72MLR
Part No.	038173	038174	080075	038958
Motor Enclosure – Shaft Material	Explosion-proof – CS	Explosion-proof – CS	Chem XP – SS	Chem XP – SS
Horsepower	1.0	1.0	Same as EN404AR58ML – 038173 except add Chemical Processing (CP) features from catalog inside front cover	Same as EN404AR72ML – 038174 except add Chemical Processing (CP) features from catalog inside front cover
Phase – Frequency ¹	Single - 60 Hz	Three - 60 Hz		
Voltage ¹	115 230	208-230 460		
Motor Nameplate Amps	11.4 5.69	3.5-3.2 1.6		
Max. Blower Amps ³	14.4 7.2	4.2 2.1		
Inrush Amps	72 36	20.2 10.1		
Starter Size	0 00	00 00		
Service Factor	1.0	1.0		
Thermal Protection ²	Class B - Automatic	Class B - Pilot Duty		
XP Motor Class – Group	I-D, II-F&G	I-D, II-F&G		
Shipping Weight	72 lb (33 kg)	65 lb (30 kg)		

¹ Rotron motors are designed to handle a broad range of world voltages and power supply variations. Our dual voltage 3 phase motors are factory tested and certified to operate on both: **208-230/415-460 VAC-3 ph-60 Hz** and **190-208/380-415 VAC-3 ph-50 Hz**. Our dual voltage 1 phase motors are factory tested and certified to operate on both: **104-115/208-230 VAC-1 ph-60 Hz** and **100-110/200-220 VAC-1 ph-50 Hz**. All voltages above can handle a $\pm 10\%$ voltage fluctuation. Special wound motors can be ordered for voltages outside our certified range.

² Maximum operating temperature: Motor winding temperature (winding rise plus ambient) should not exceed 140°C for Class F rated motors or 120°C for Class B rated motors. Blower outlet air temperature should not exceed 140°C (air temperature rise plus inlet temperature). Performance curve maximum pressure and suction points are based on a 40°C inlet and ambient temperature. Consult factory for inlet or ambient temperatures above 40°C.

³ Maximum blower amps corresponds to the performance point at which the motor or blower temperature rise with a 40°C inlet and/or ambient temperature reaches the maximum operating temperature.

ROTRON® Regenerative Blowers

Filtration Accessories

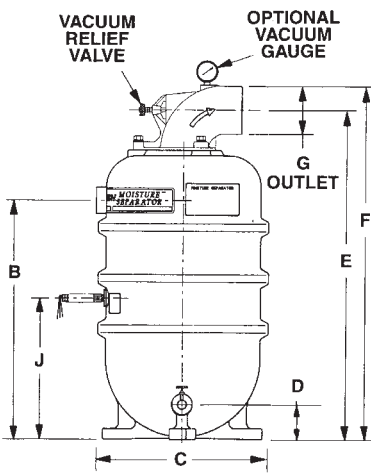
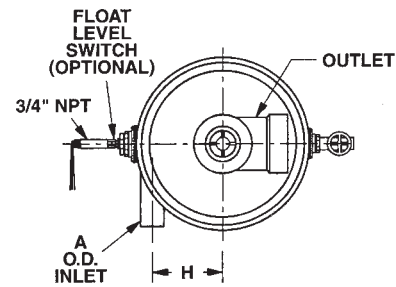
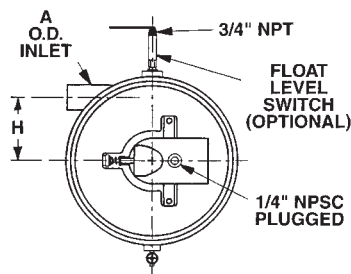
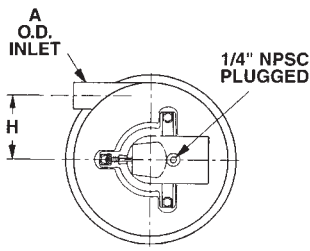
Blower Connection Key	
NPT	American National Standard Taper Pipe Thread (Male)
NPSC	American National Standard Straight Pipe Thread for Coupling (Female)
SO	Slip On (Smooth – No Threads)

Moisture Separator™

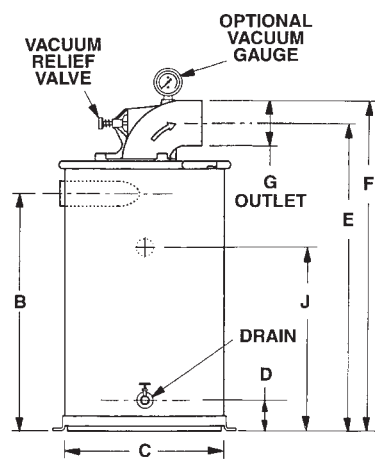
By separating and containing entrained liquids, Rotron's moisture separator helps protect our regenerative blowers and the end treatment system from corrosion and mineralization damage. Recommended for all soil vacuum extraction applications.

SPECIFICATIONS:

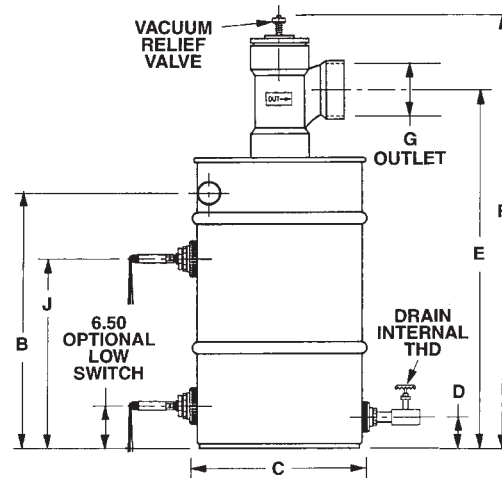
SEPARATION METHOD – High Efficiency Cyclonic
 RELIEF VALVE MATERIAL – Brass & Stainless Steel
 FLOAT MATERIAL – Copper
 FLOAT SWITCH – SPDT, Explosion-proof
 NEMA 7&9, 5 Amp max.



PLASTIC "P" DESIGN



METAL "D" DESIGN



METAL "B" DESIGN

Model	Part No.	CFM Max.	A Dia.	B	C Dia.	D	E	F	G Dia.	H	J Switch	Drain Internal THD	Shipping Weight
MS200PS	038519	200	2.38	22.46	16.00	3.25	31.05	33.30	4.50 OD	6.00	13.25	3/4" NPT	42 lb.
MS300PS	038520	300	2.88							6.56	12.62		
MS200DS	080086	200	2.00	6.81	12.62								
MS300DS	080087	300	2.50	22.12	16.75	2.75	27.92	30.17	6.63 ID	9.75	17.50	1" NPT	82 lb.
MS350BS	038357	350	3.25							28.00			23.00
MS500BS	080660	500	4.00	27.00	37.37	54.50	8.62 OD	10.00		19.88			
MS600BS	080659	600	6.00	31.00	27.00		47.32	51.70				150 lb.	

Models without float switch available. Metal MS200/300DS models are not the standard stocked, but are available.

Rev. 2/04

ROTRON® Regenerative Blowers

Filtration Accessories

Blower Model Reference Key	
A = SPIRAL	E = DR/EN/CP 656, 6, 623, S7
B = DR/EN/CP 068, 083, 101, 202	F = DR/EN/CP 707, 808, 858, S9, P9 (Inlet Only)
C = DR/EN/CP 303, 312, 313, 353	G = DR/EN/CP 823, S13, P13 (Inlet Only)
D = DR/EN/CP 404, 454, 513, 505, 555, 523	H = DR/EN/CP 909, 979, 1223, 14, S15, P15 (Inlet Only)

2.0 Moisture Separator™ Specifications

2.1 DUTY

The moisture separator shall be designed for use in a soil vapor extraction system capable of continuous operation with a pressure drop of less than six inches of water at the rated flow of _____ SCFM. The separator shall be capable of operation under various inlet conditions ranging from a fine mist to slugs of water with high efficiency.

2.2 PRINCIPLE OF OPERATION

The moisture separator shall incorporate cyclonic separation to remove entrained water. The separator must protect against an overflow by fail safe mechanical means. An electrical switch or contact(s) alone is not an acceptable means of protection against overflow, but is a good backup.

2.3 CONSTRUCTION

The body of the moisture separator shall be constructed of heavy wall plastic or heavy gauge cold rolled steel. The steel interior and exterior shall be epoxy (powder) coated to resist abrasion, corrosion, and chipping that might expose the surface. The inlet shall be tangentially located and welded to the body. The outlet port shall be constructed of PVC or cast aluminum alloy, flanged and sealed to the center of the top of the separator. The separator shall incorporate a non-sparking copper

float ball and an adjustable relief valve to protect against overflow and overheating the blower.

2.4 CAPACITY AND DIMENSIONS

The moisture separator must have a liquid capacity of _____ gallons. The inlet shall be _____ inch OD slip-on type. The outlet shall be _____ inch OD slip-on type.

For DR/EN/CP Blower Model	Selector Moisture Separator Model	Liquid-holding Capacity (gallons)	Inlet (OD)	Outlet	Max Vacuum Allowed (IHg)
404 454 505 513 523 555 623 823	MS200PS	7	2.38	4.5" OD	12
	MS200DS	10	2.0		22
656 6 707	MS300PS	7	2.88	6.63" ID	12
	MS300DS	10	2.5		22
808	MS350BS	40	3.25		
858 1223	MS500BS		4.0"		
909	MS600BS		6.0"	8.62" OD	
979 14	MS1000BS	65			

2.5 PRESSURE DROP

