

1 Install Win-Situ[®] 5 to your local hard drive from the In-Situ software CD or the In-Situ website. Optional: Install the desktop component of Win-Situ[®] Mobile to the same computer. Then use the In-Situ Software Manager to install it on the RuggedReader[®] at your next ActiveSync[®] connection.

Tip: If using a USB TROLL Com, be sure to select the option "Install USB TROLL Com Drivers" when installing Win-Situ.

2 Attach a TROLL Com to the Level TROLL or to its cable.

Tip: Mating the cable connectors is easy after you do it once. See the steps and photos on the back of this Quick Start Guide.

3 Plug the TROLL Com into a USB or serial port on a desktop/laptop PC, or into the serial port on a RuggedReader handheld PDA.

After plugging in a USB TROLL Com, follow the prompts to install the drivers. Then use Windows[®] Device Manager to determine which COM port the USB TROLL Com is using.

4 Launch the software:

Win-Situ: Double-click the desktop shortcut

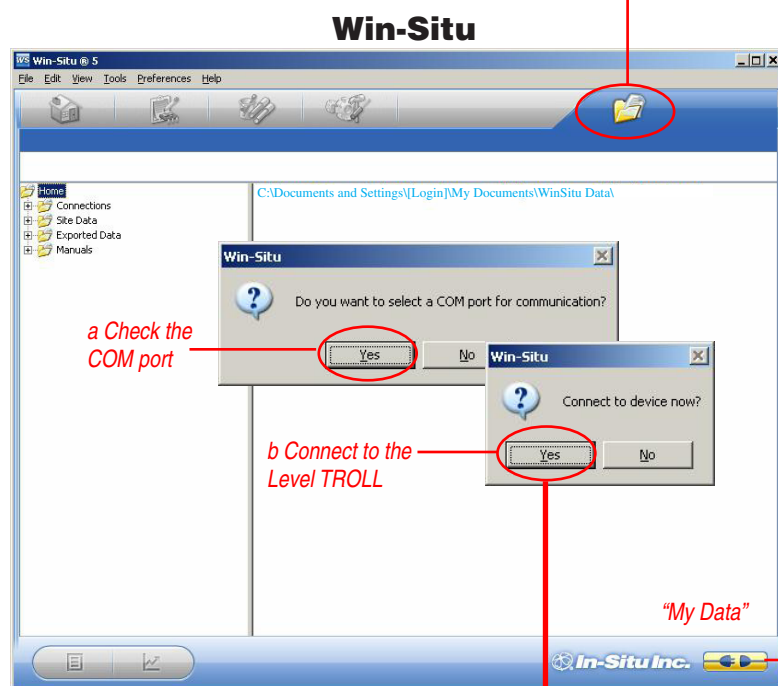
Win-Situ Mobile: Tap the Start menu, tap Win-Situ Mobile

USB or serial port

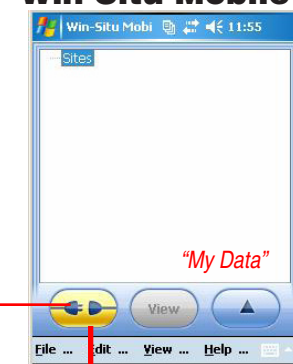
Serial port

5 Win-Situ launches. The screen shows the **My Data** tab. **a.** On first connection, be sure to select the correct COM port for a USB connection. **b.** Then connect to the device.

Win-Situ Mobile launches at the **My Data** tab. Tap the **Connect** Button to connect to the Level TROLL.

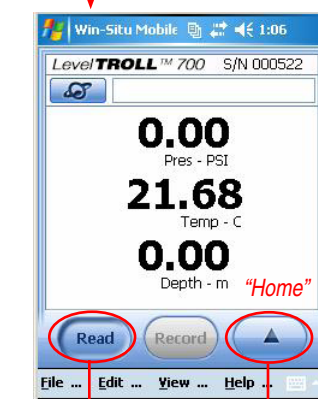
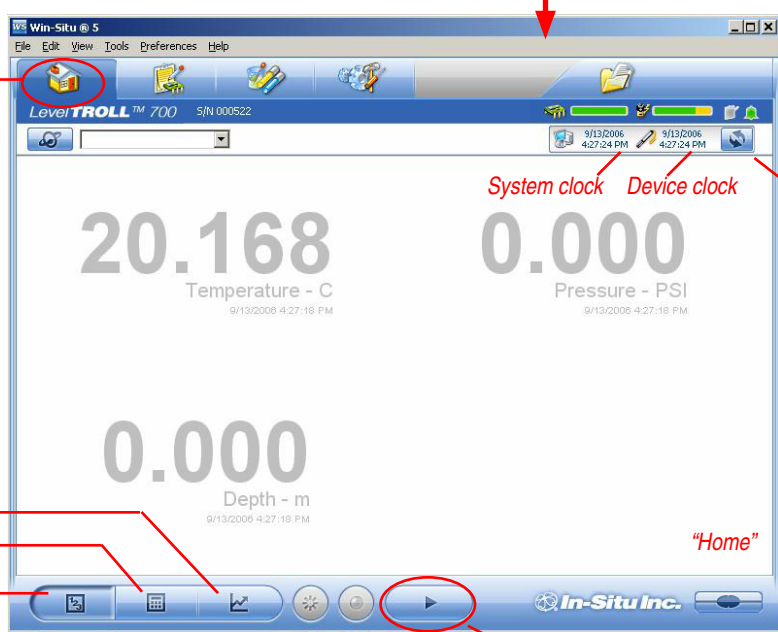


Win-Situ Mobile



Not connected
 Connected

When connected, focus shifts to the **Home** tab. Readings are shown in "meter" view. Values in gray are not being updated in real time.

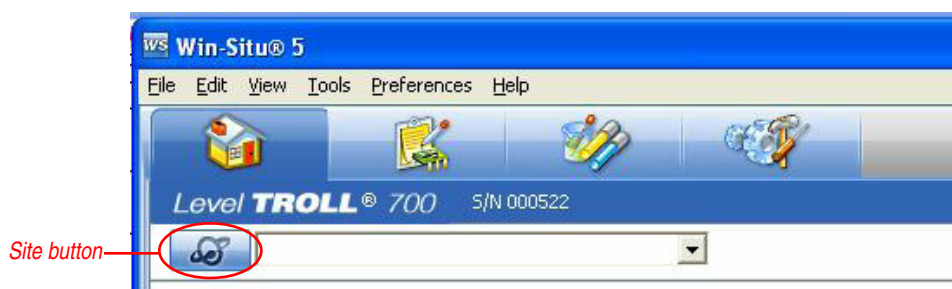


Readings update when button looks pressed in
"Expander" - tap to access Time sync

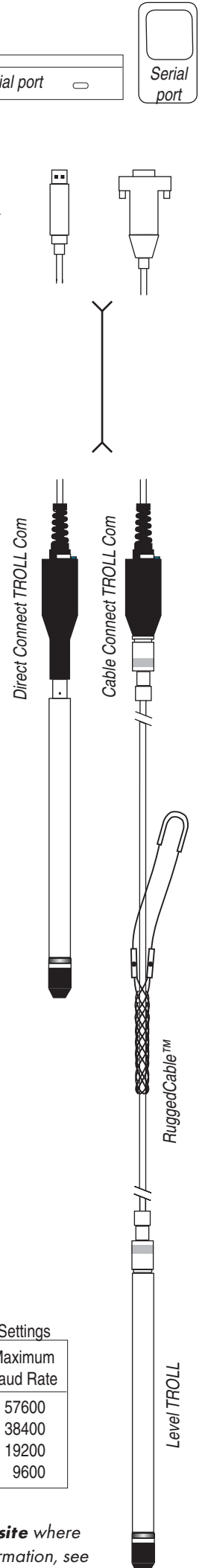
Recommended Baud Settings

Cable Length		Maximum Baud Rate
Meters	Feet	
300	1000	57600
450	1500	38400
1200	4000	19200
>1200	>4000	9600

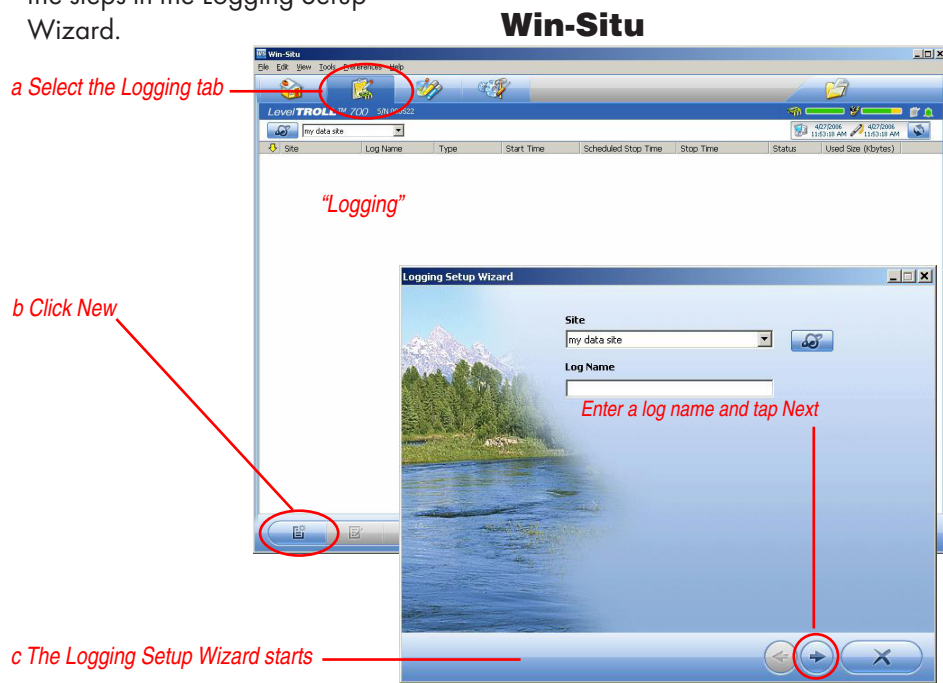
6 Set up a Site: Click the Site Button , select the Default Site or click the New button to set up a custom site. The site name can have up to 32 characters. Location coordinates are optional.



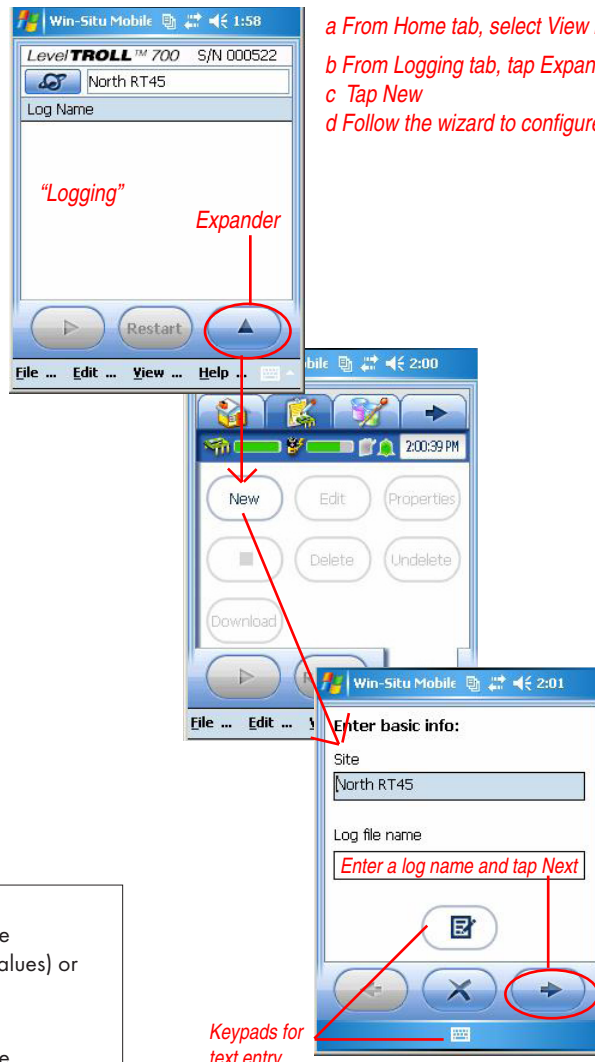
All data logs are associated with the site where the data were logged. For more information, see Win-Situ Help, or Win-Situ Mobile Help.



7 To set up a data log, follow the steps in the Logging Setup Wizard.



Win-Situ Mobile



For help, see the Help menu in Win-Situ or Win-Situ Mobile. The complete Level TROLL operator's manual is available on the In-Situ software CD and website.

Typical Level Settings

	Level Output	Depth to Water (DTW)/Drawdown
AQUIFER TESTING deployment on cable or wire	Specific Gravity Reference	Choose fresh, brackish, or salt water as appropriate Set first logged reading to: zero (log shows delta values) or <u>with probe installed</u> , enter measured DTW
SURFACE-WATER PROFILING deployment on cable	Level Output Specific Gravity	Depth of Probe Choose fresh, brackish, or salt water as appropriate
LONG-TERM MONITORING deployment on cable or wire	Level Output Specific Gravity Reference	Elevation or Gauge Height Choose fresh, brackish, or salt water as appropriate Set first logged reading to: measured elevation or gauge height, or <u>with probe installed</u> , enter elevation or gauge height

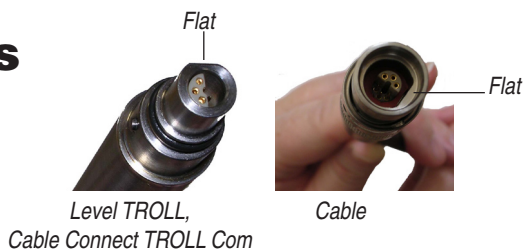
8 When you are finished programming, disconnect the TROLL Com and reattach the desiccant—or attach a Twist-Lock Hanger and suspension cable for a non-vented instrument—and install the Level TROLL in its monitoring location.

If logged data from an In-Situ BaroTROLL® will be used to post-correct LevelTROLL data logs, the BaroTROLL log should start near the time the Level TROLL log starts. Be sure both devices' clocks are synchronized.

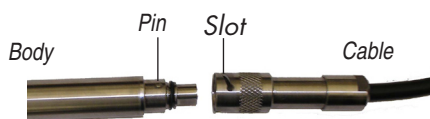
Twist-Lock Connectors

Mating the Twist-Lock connectors is easy after you do it once to get a feel for the process.

Note that each connector has a flat side.

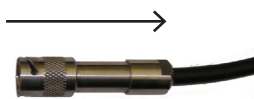


Note the pins on the body connector (one on each side) and the slots on the cable connector (one on each side).



To mate the connectors:

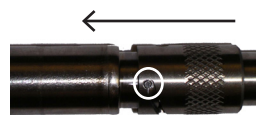
1 Slide back the sleeve on the cable connector.



2 Orient the "flats" so they will mate up, and insert the body connector firmly into the cable connector.



3 Slide the sleeve on the cable connector toward the body until the pin on the body pops into the round hole in the slot on the cable connector.



4 Grasp the cable connector in one hand and the Level TROLL in the other. Push and twist firmly so that the pin slides along the slot and snaps securely into the hole at the other end.



Non-Vented Level TROLL

Range PSIA	Effective Range*		Usable Depth	
	PSIA	kPa	Meters	Feet
30	15.5	106.9	0-10.9	0-35.8
100	85.5	589.5	0-60.1	0-197.3
300	285.5	1968	0-200.7	0-658.7
500	485.5	3347	0-341.3	0-1120

* At sea level (14.5 PSI atmospheric pressure).

Vented Level TROLL

Range PSIG	kPa	Usable Depth	
		Meters	Feet
5	34.5	0-3.5	0-11.5
15	103.4	0-11	0-35
30	206.8	0-21	0-69
100	689.5	0-70	0-231
300	2068	0-210	0-692
500	3447	0-351	0-1153

Guidelines & Precautions: If the holes in the nose cone are plugged, swish the Level TROLL in a bucket of water. In severe cases, remove the nose cone to rinse out the holes. Or try soaking overnight in a mild acidic solution, such as household vinegar. *Don't dig or scrape in the pressure sensor opening!* The sensitive pressure sensor diaphragm is vulnerable when exposed.

Damage caused by digging or scraping in the pressure sensor opening to remove debris is not covered by the warranty.

Nose cone

